



# HERO SERIES

outdoor led screen

DIE CAST



## • Strong Flame Resistance

Aluminum material, high temperature durability, fast heat-dissipation.

The whole product can Reach 5VB fireproofing level.



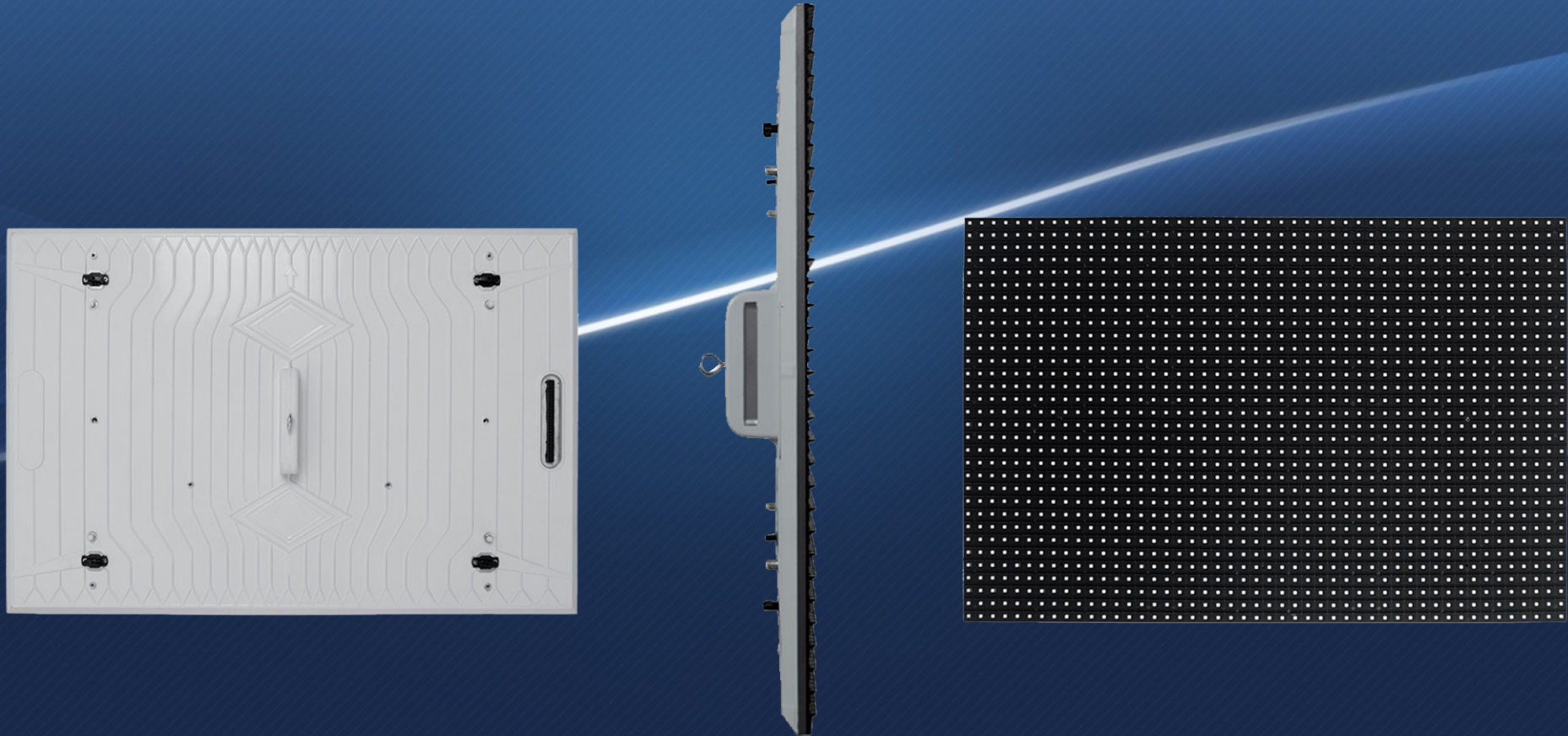
## • Light Weight

Weight: 28KG/m<sup>2</sup> for Aluminum frame

Weight: 35KG/m<sup>2</sup> for mental frame

Thickness: 75mm

## ◆ Structural Appearance



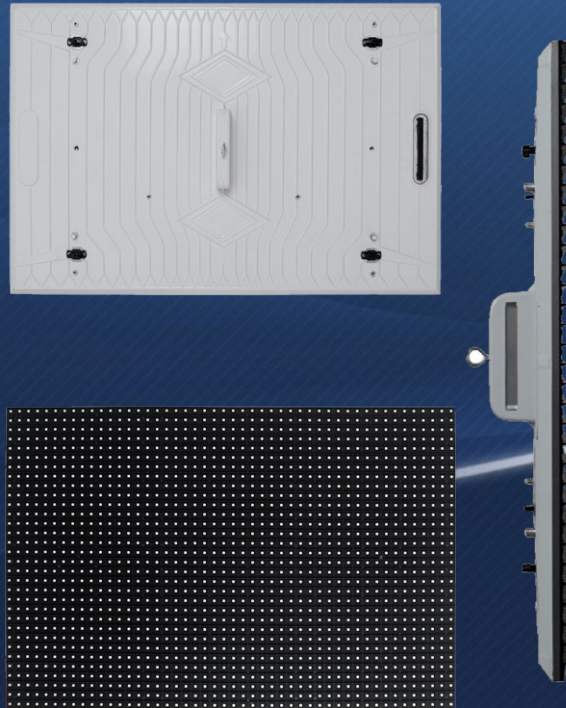
Technical Parameters



**CABINET INFO**

<b>Module composition</b>	W(pc)	H(pc)	Total (pcs)
	2	3	6
<b>Cabinet Size(mm)</b>	W(mm)	H(mm)	D(mm)
	960	960	93
<b>Cabinet Resolution</b>	W(Pixels)	H(Pixels)	Total Pixels
	168	168	28224
<b>Cabinet material</b>	Aluminum Profile		
<b>Cabinet Weight(kg)</b>	25		
<b>Maintenance method</b>	Rear & Front		
<b>Receiver card</b>	Brand & Type	Qty	Refresh Rate
	Nova-A5S	1	3840Hz
<b>Power supply</b>	Brand & Type	Qty	Input Power
	NDC300PS5-B UL	3	100-240v 50/60Hz
<b>Cabinet Power</b>	Ave.(W)	Max(W)	
<b>Consumption(W/M<sup>2</sup>)</b>	150	450	

## Structural Appearance

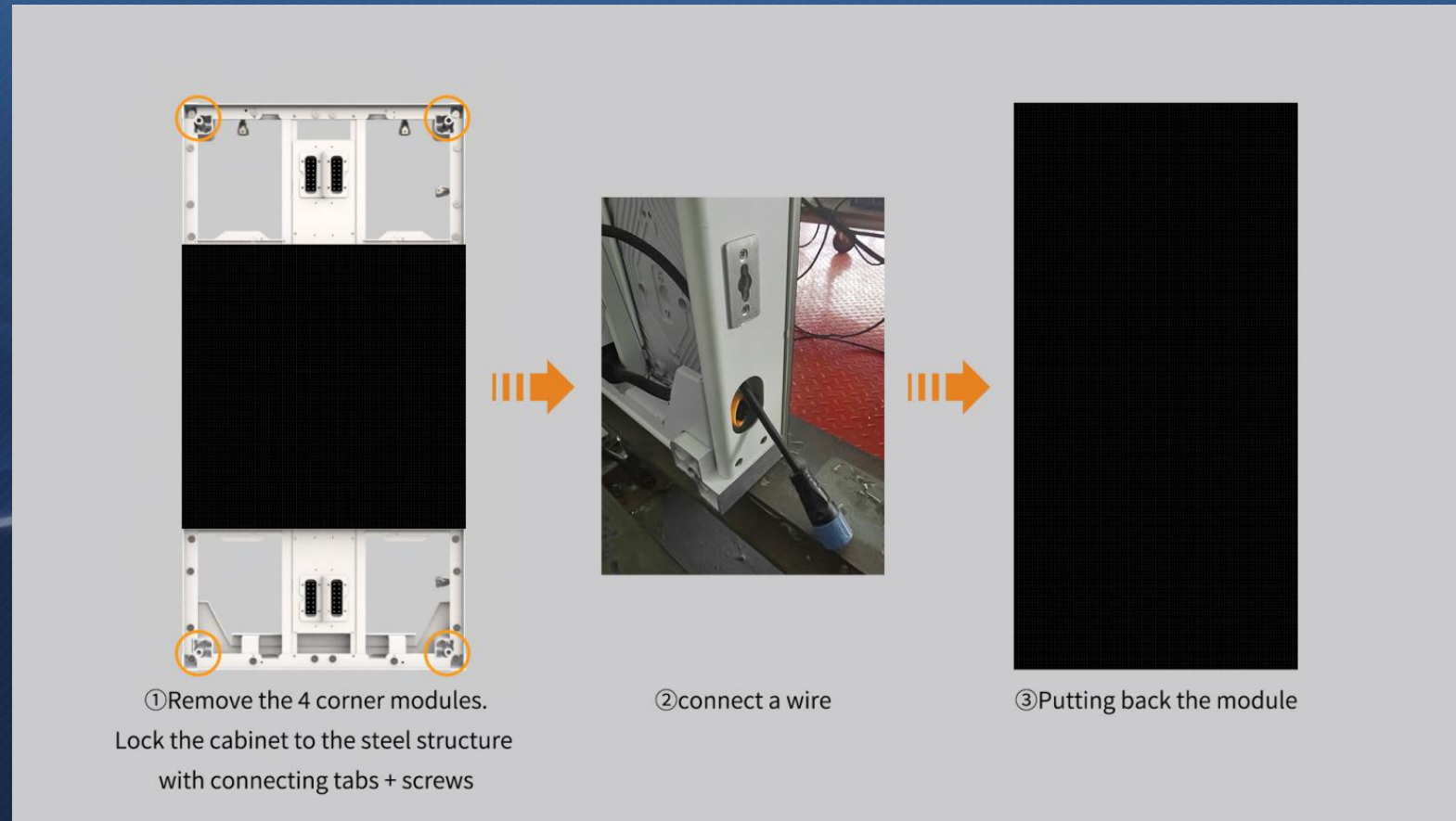


SCREEN PARAMETERS			
Cabinet Composition	W(pc)	H(pc)	Total(Pcs)
	1	1	1
Screen Size	W(m)	H(m)	$m^2$
	0,96	0,96	0,92
	W(ft)	H(ft)	$FT^2$
	3,16	3,16	9,97
Screen Resolution	W(Pixels)	H(Pixels)	Total(Pixels)
	168	168	28224
Screen Weight(kg)	25		
Screen Power Consumption	Ave.(Kw)	Max(kw)	
	0,14	0,41	
OPTICAL PARAMETER	Single Dot Brightness Amended	Yes	
	Single Dot Color Amended	Yes	
	White Balance Brightness (nits)	5.800	
	Color Temperature (K)	9000-13000	
	Visual Angle (Horizontal/Vertical)	140/120	
	Brightness/Colorful Evenness	≥99%	
	Contrast Ratio	5000:1	
PERFORMANCE PARAMETER	Frequency (Hz)	≥60	
	IC Driving	1/7 Scan	
	Grayscale	≤65536	
	Refreshing Ratio (Hz)	3840	
	Color Processor	12 bit	
	Lifespan (hrs)	100,000H	
	Work Temperature/Humidity (°C/RH)	-10°C-50°C/10%RH-98%RH	
	Storage Temperature/Humidity (°C/RH)	-20°C-60°C/10%RH-98%RH	



## ◆ Cabinet structure

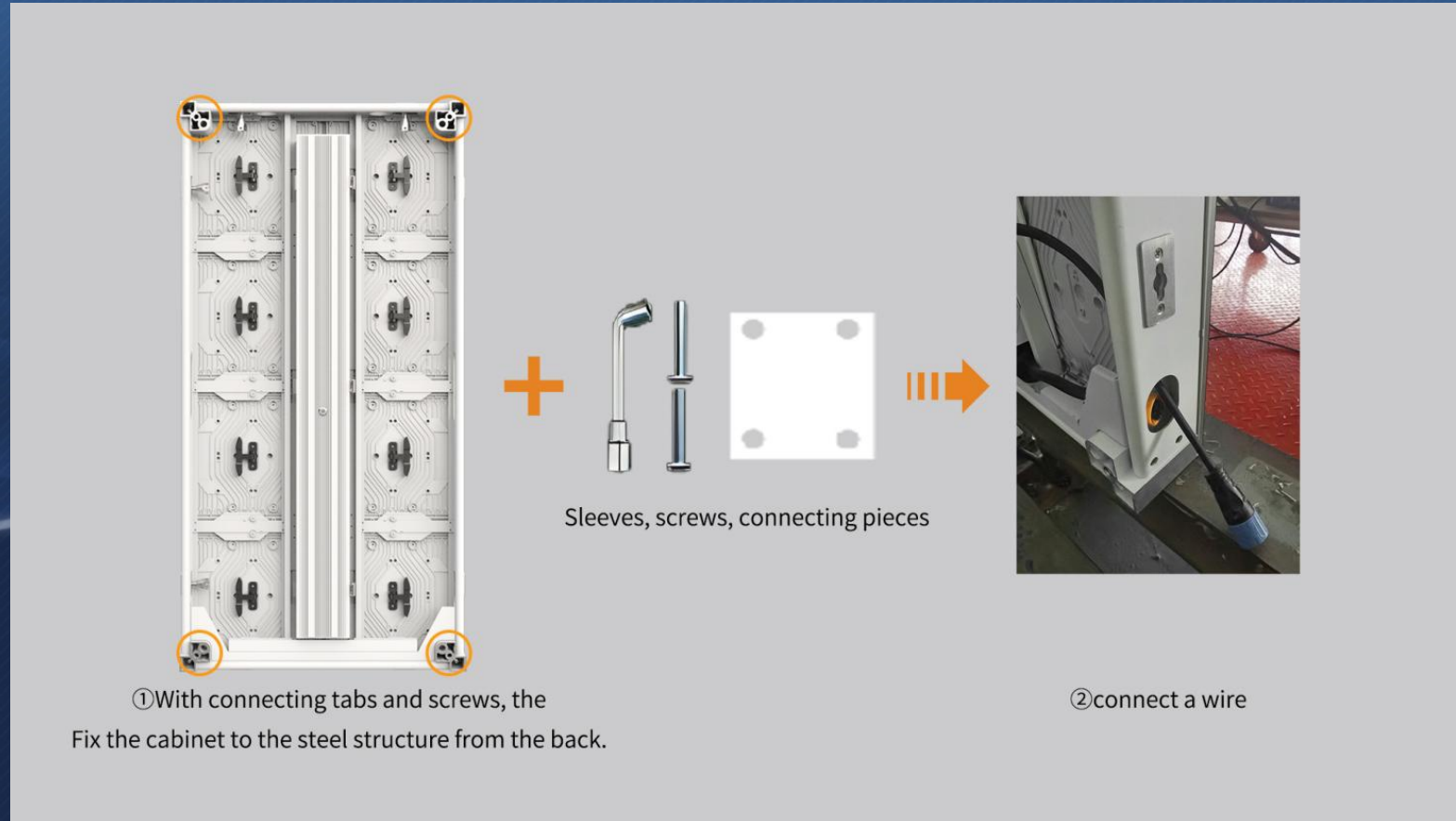
Picture 4-3 Cabinet Front Mount





# Cabinet structure

Picture 4-4 Cabinet Rear Mount



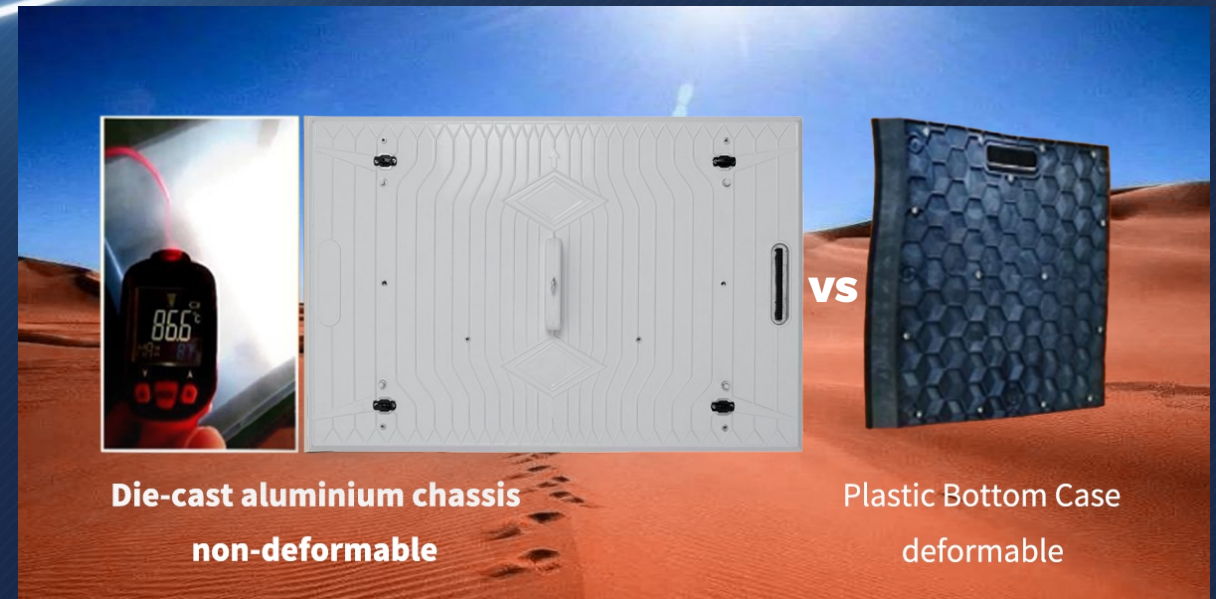
## Waterproof design

IP66 protection level, using outdoor special independent waterproof module and excellent sealing waterproof cabinet to prevent water vapour from attacking the screen, fanless design to reduce the leakage of water failure points.



## Fire retardant

Hero series adopts die-casting aluminium module, profile aluminium cabinet, no deformation under high temperature conditions, no spontaneous combustion, safe and reliable.





## Notification

Table 6-1 Notification

Item	Notification
Temperature	Keep the work temperature within -10°C~50°C
Humidity	Keep the storage temperature within -20°C~60°C
Waterproof	Keep the work humidity within 10%RH~98%RH
Dust-proof	Keep the storage humidity within 10%RH~98%RH
Anti-Electromagnetic radiation	IP66
Electrostatic Prevention	IP66
Temperature	LED display shouldn't put under the environment where has strong interference by electromagnetic radiation, which would be easy to picture display abnormal.
Humidity	It should be ground connected well for power supply, cabinet, mental cover of display body, the resistance of ground connection<10Ω, to avoid making any damage to electric components.

## User Manual

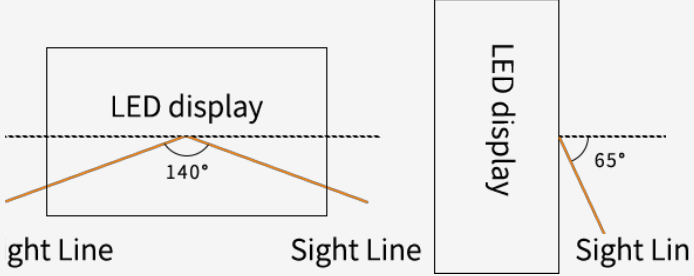
Table 6-2 User Manual

Item	User Manual
Electrostatic Protection	The installer need wear electrostatic ring and electric gloves, each equipment should take ground connection well when installing.
Connection Type	There are positive and negative electrode silk printed on module, don't allow to reverse connect, and prohibit to connect with AC 220V.
Operate Type	Prohibit to assemble module, cabinet and whole of display under power on, operation should be under power off completely, to protect personal safety; Prohibit anyone to touch when the LED display is working, in case the static electricity which is generated by body to break through LED and other components.
Dismantle and Transportation	Don't allow to throw, push, compress module, to prevent module falling down, to avoid breaking kit, damage LED chips, etc.
Environmental Inspection	It should match temperature and humidity meter for LED display at installation site, to monitor its surrounding environment, so that it can find out if LED display being affected with damp, moisture, etc.

## Acceptance Request and Method

Item	User Manual
The Usage of LED display	1.The environmental humidity should be 10%RH~65%RH, it is suggested to turn on LED display one time each day, normal to use above 4 hours each time, to remove its damp.
	2.When the environmental humidity is above 65%RH, it should make dehumidification to environment, and it is suggested to work LED display above 8h each day.
	3.When LED display has not turned on for a long time, it should preheat LED display to remove moisture before use, to avoid damage LED because of damp, the specific method: 20% brightness to work for 2h, 40% brightness to work for 2h, 60% brightness to work for 2h, 80% brightness to work for 2h, 100% brightness to work for 2h, by this to gradually increase its brightness.

Table 6-3 Acceptance Request and Method for LED display

Item	Acceptance Request and Method
Brightness of LED Display	Switch LED display to work as full brightness, use light-gun to measure the brightness of LED display within 10 minutes. When measuring its brightness, the light-gun need be vertical to LED display, to adjust the distance of light-gun and LED display, ensure the view window, black area, cover above 16 pixels, adjust focal length, to ensure LED chip being able to clearly view in eyepiece, then measure and record brightness data.
Visual Angle	<p>The one should stand on the angle of 140°, bottom angle 65° to LED display when making measurement, it is requested that LED display should not have obvious the problem of dark block.</p> 

## Product Application



Suitable for advertising media, community publicity, enterprise display, tourist attractions, station advertising, roadside advertising and so on .



Outdoor advertising screen



Outdoor advertising screen

## Product Application

Suitable for advertising media, community publicity, enterprise display, tourist attractions, station advertising, roadside advertising and so on .



Scenic spot advertising screen



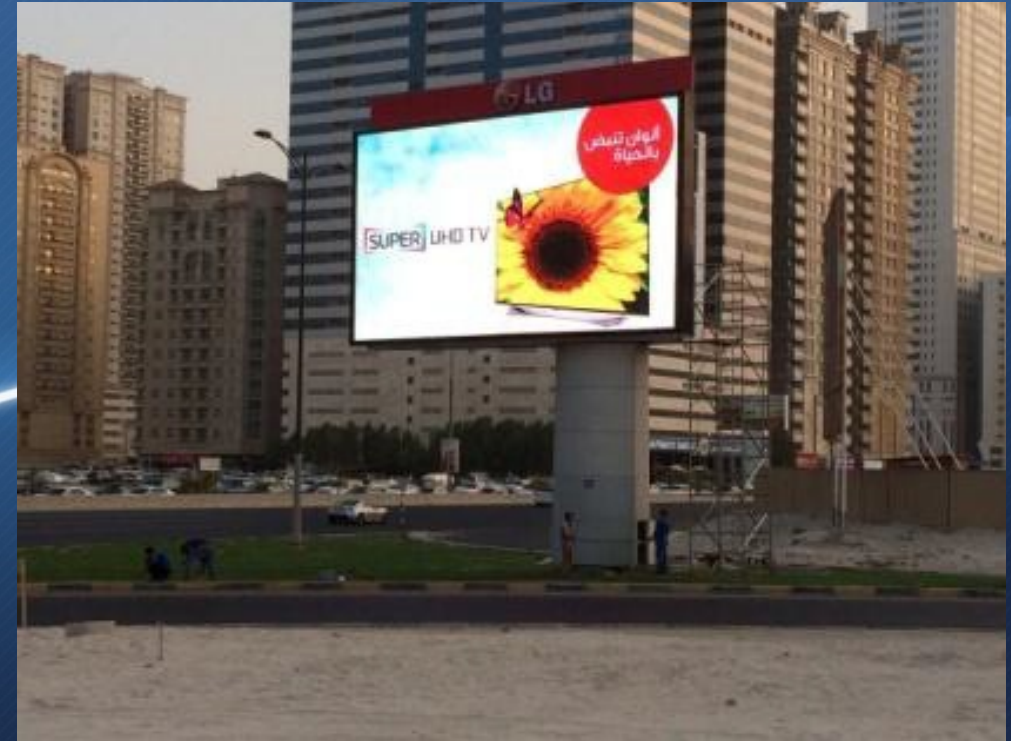
Outdoor advertising screen

## Product Application

Suitable for advertising media, community publicity, enterprise display, tourist attractions, station advertising, roadside advertising and so on .



P16mm | 60sqm | High-way Roadside Screen



P10mm | 65sqm | Street-side Billboard